

Dynein Light Chain 1, a p21-Activated Kinase 1-Interacting Substrate, Promotes Cancerous Phenotypes

Ratna K. Vadlamudi, Rozita Bagheri-Yarmand, Zhibo Yang, Seetharaman Balasenthil, Diep Nguyen, Aysegul Sahin, Petra den Hollander, and Rakesh Kumar*

*Correspondence: bcmrxk@gwu.edu

<http://dx.doi.org/10.1016/j.ccr.2013.03.006>

(Cancer Cell 5, 575–585; June 1, 2004)

We became aware that the above paper contains some perceived errors wherein dotted lines were not used when lanes were brought together. We have now modified Figures 3D, 6D, 6I, and 8A to reflect this; the corrected figures are printed below. There is no change in the legend or text.

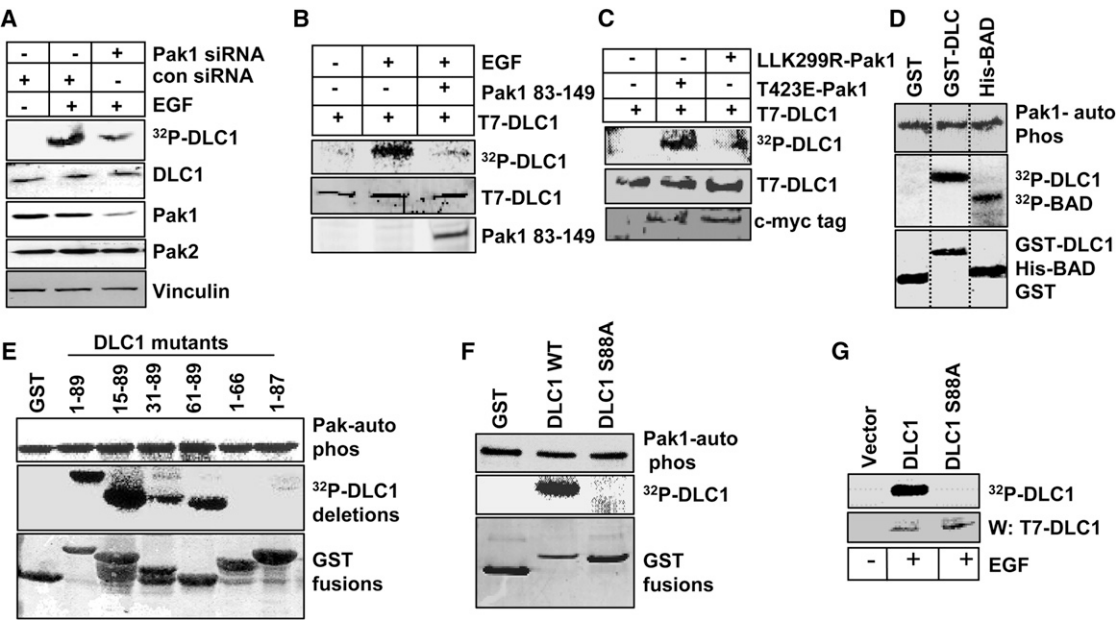


Figure 3. Pak1 Phosphorylation of DLC1

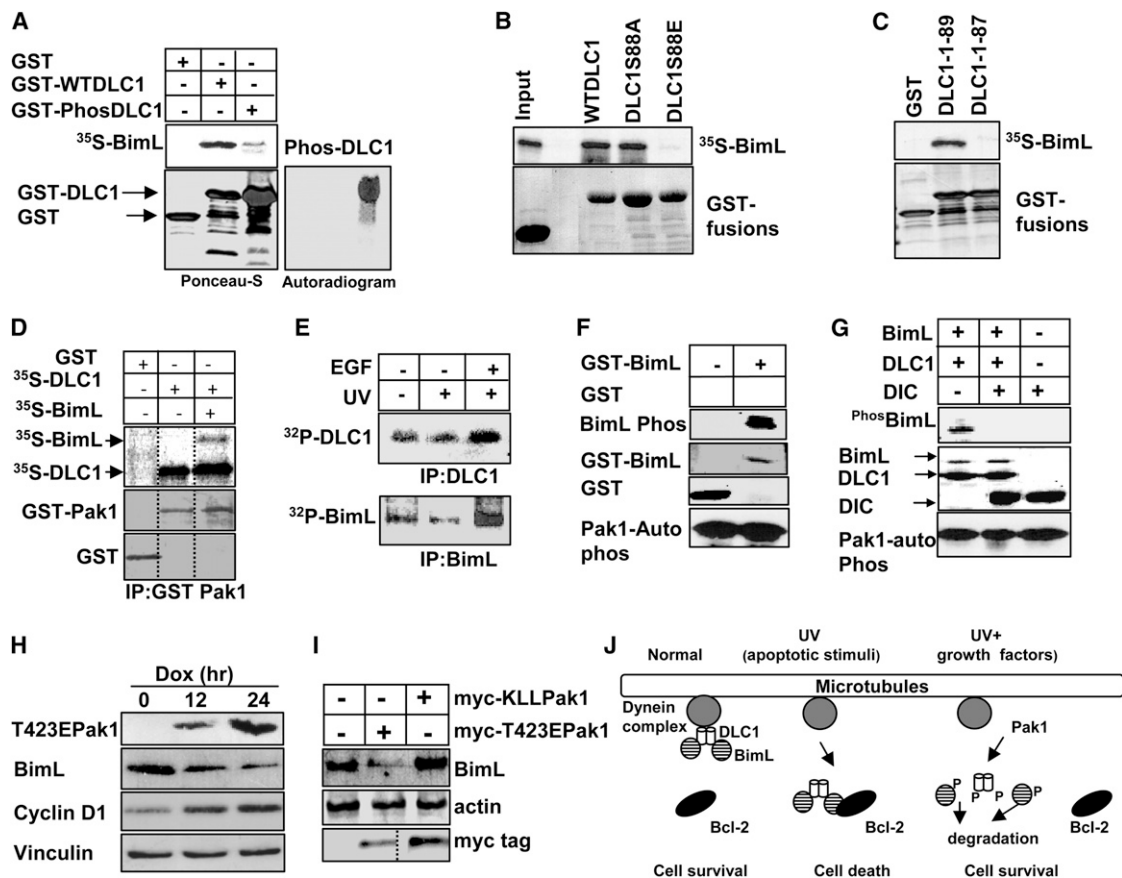


Figure 6. Pak1 Phosphorylation Regulates BimL and DLCL1 Interactions

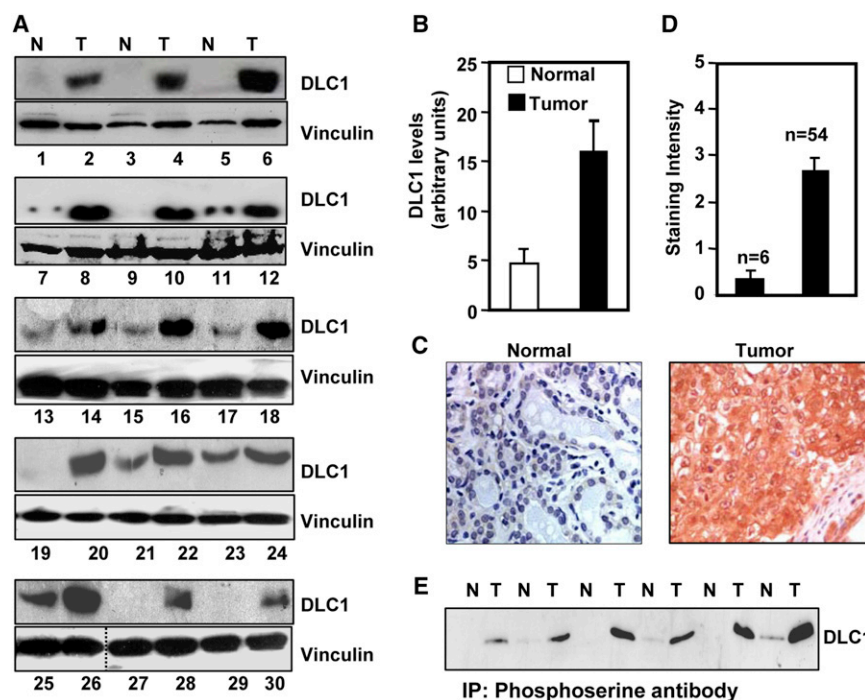


Figure 8. DLCL1 Deregulation in Human Breast Tumors